

**HISTORIC FORT MONROE:** GPS: LAT: 37 00 08 N LONG: 76 18 32 W. Take I-64 to Hampton. Exit I-64 at Exit 268, Phoebus. Turn left at stop light on to Mallory St. and go approximately 0.2 miles. Turn right onto E. Mellen St. (State Route East 143). Follow the signs to Fort Monroe. Veer right after crossing the bridge to enter on McNair Drive. Continue on McNair Drive as it curves to the right passing the Historic Chamberlin Hotel (now luxury apartments) (road changes name to Fenwick). At stop sign, turn left on Ingalls Road. Turn right at the first right, Ruckman Road. Drive over the sallyport and turn right on Bernard Road. As Bernard Road curves to the left, the Casemate Museum is on the right. Parking is across from the Casemate but DO NOT park between the signs that say Museum Parking.

**NEWPORT NEWS - NOLAND TRAIL AND CNU:** GPS: LAT: 37.03 19 N LONG: 76 29 18 W. From Interstate 64 (East or West), take Exit 258A, J. Clyde Morris Blvd, US Route 17 South. Drive about 2.5 miles to the end of J. Clyde Morris Blvd at Warwick Blvd (the multi-lane highway). Continue straight across Warwick Boulevard to Avenue of the Arts. Go 0.1 miles and turn left at a blue Mariners' Museum sign. Continue straight to enter the Museum grounds. Park in the parking lot near the museum.

**JOINT BASE LANGLEY-EUSTIS:** GPS: LAT: 37.1579 N LONG: 76.5783 W. Take I-64 to Newport News, Exit 250A, Ft. Eustis Blvd., VA Route 105 West. Stop at Visitor Entrance if no military ID. Enter the post on Washington Blvd. and go through the roundabout. Take the next left turn onto Patton Blvd (Turner Ave on the right) and go one block to Burger King. Park near the back of the lot.

**NEWPORT NEWS – HILTON VILLAGE:** (From Norfolk): GPS: LAT: 37 01 07 N LONG: 76 27 09 W. Take I-64 to Exit 263A, Mercury Blvd, Route 258 South. \*\*At the bottom of the ramp, turn right on Mercury Blvd. Proceed approximately 3.3 miles to Warwick Boulevard (turn is at top of overpass). At the bottom of the ramp, turn right on Warwick Boulevard. Turn left at the first light (one block) onto Hornet Circle. The YMCA is the first building on the left. (From Richmond): Take I-64 to Exit 263, Mercury Blvd, Route 258 South and following directions from \*\*.

# Peninsula Pathfinders of Virginia

## 2018 Year Round Events

January 2 - December 31, 2018

As of December 2017

[www.peninsulapathfinder.org](http://www.peninsulapathfinder.org)

**Hampton 6/10 Km Walk (AT2018/Y1730)**

**Yorktown Battlefield (Town) 5/6/10 Km Walk  
(AT2018/Y284)**

**Yorktown Battlefield (Battlefield) 5/10 Km Walk  
(AT2018/Y285)**

**Colonial Williamsburg 6/10 Km Walk  
(AT2018/Y287)**

**Historic Ft. Monroe 5/10 Km Walk (AT2018/Y874)**

**Newport News (Noland Trail) 5/11 Km Walk  
(AT2018/Y1819)**

**Newport News (Christopher Newport University  
(CNU) 6/10 Km Walk AT2018/Y0833)**

**Newport News (Hilton Village) 5/10 Km Walk  
(AT2018/Y1371)**

**Jamestowne 5/10/12 with 2 km option Walk  
(AT2018/Y286)**

**JB Langley-Eustis 6/10 Km Walk (AT2018/Y1483)**



## GENERAL INFORMATION

**SANCTION:** These events are sanctioned by the American Volkssport Association (AVA), a member of the International Federation of Popular Sports (IVV). These events count for acquisition of IVV achievement awards.

**SPONSOR:** All events are sponsored by Peninsula Pathfinders (AVA 142).

**REGISTRATION PROCEDURES:** Varies at each start location. Ask for the Peninsula Pathfinder walk/volksmarch box. Complete the paperwork for the event in accordance with the instructions in the box. **Please remember that all locations are business locations.** Be patient while they wait on their customers. There is no pre-registration for any of the events.

**TRAILS:** ALL TRAILS MUST BE COMPLETED DURING DAYLIGHT HOURS. Trail ratings are shown on the individual walk pages.

**AWARDS:** Each event has an A-Award patch. The award for both Yorktown events is the same. Picture of the current awards are shown in the middle of this brochure. Awards are subject to change during the year.

**FEES & IVV CREDIT:** A Award fees vary for each walk (\$6.00-\$10.00). B Awards are \$4.00 each. The credit only fee is \$3.00. Awards and cost of awards may be updated during the year. See start box instructions or our website: <http://www.peninsulapathfinder.org> for latest A Award and fees. There is no fee just to walk the trail—but you must carry a start card. Since the start location cannot collect fees for us, a self-addressed envelope will be provided for you to mail a copy of the start card and your fee to the Peninsula Pathfinders of Virginia. **PLEASE PAY BY CHECK.** Event credit can be earned once a day during the year for each event. Distance credit may be earned without limit. Please note that you may only complete the 10, 11, or 12 Km trails twice in the same day on each start card. Additional credit for the 5 and 6 km trails will require another start card and registration fee.

**ELIGIBILITY:** Everyone!! Children under 12 must be accompanied by an adult. Groups are welcome. If you are bringing a large group, please contact us so that we may meet you at the start in order to take some of the workload off the start location personnel.

**CONDITIONS:** All pets are to be kept on a leash (6 feet or less) at all times. Water will be available at the start/finish. Carry water! Restrooms are available at the start points. There may be no water or restroom facilities along the trails. Litter must be deposited in the designated containers. Please exercise care when you are walking on the shoulders of the roads.

**REFUND POLICY:** There will be no refund of any fees paid.

**DISCLAIMER OF LIABILITY:** The American Volkssport Association or its subsidiary clubs are not responsible for theft or loss of personal belongings or property. Reasonable effort will be made by the sponsors to make this a safe, enjoyable and memorable event(s).

**INFORMATION ABOUT VOLKSSPORTS:** [www2.ava.org](http://www2.ava.org)

## DIRECTIONS

**YORKTOWN GPS:** LAT: 37 13 51 N LONG: 76 30 10 W. (From Norfolk, Hampton, Newport News): Take I-64 west to Exit 258B, US 17 North. Follow US 17 North about 8.1 miles to the stoplight at Cook Road. Turn right at that stoplight onto Cook Road (VA 704). Follow Cook Road to the stop sign (about 2.4 miles). Turn left onto VA 238. Proceed about 0.1 miles and turn a hard right. Proceed towards the Visitors Center and park at the parking lot at the visitors center. **(From Richmond and Points North):** Take I-64 east to Exit 242B, Rt 199 East. Travel east on Rt 199 about 2 miles. The road will narrow from four lanes to two. You will come to a high security fence on both sides of the road and a water tower on the left side. After you pass the water tower, you will turn right up the ramp to the Colonial Parkway. At the stop sign at the top of the ramp, turn right towards Yorktown. Drive down the Colonial Parkway to the stop sign (about 8.5 miles). At the stop sign, you will proceed straight across and park at the parking lot at the Visitors Center.

**HAMPTON:** GPS: LAT: 37 01 29 N LONG: 76 20 47 W. Take I-64 towards Hampton to Exit 267, VA143/US 60/Settlers Landing. Go West on VA 143/US 60 for approximately 1.2 miles. Turn right on Old Hampton Lane. Go 0.1 miles. Follows signs to The Hampton History Museum and Visitors Center. Park in any of the visitor parking lots, parking garage located by the visitors center (free parking), or along the street in authorized parking areas.

**JAMESTOWNE:** GPS: LAT: 37 12 41 N LONG: 76 46 38 W. Take I-64 towards Williamsburg to Exit 242A, Humelsine Parkway (Rt 199 West). Drive about 3.4 miles to the second stoplight. At the second stoplight, turn right onto S. Henry Street (Rt 132). Immediately turn right again and at the bottom of the ramp turn right onto the Colonial Parkway towards Jamestowne. Continue on the parkway approximately 8.4 miles until you come to the Visitors Center for the Jamestowne portion of the Colonial National Historical Park.

**COLONIAL WILLIAMSBURG:** GPS: LAT: 37 16 07 N LONG: 76 41 09. (From Norfolk, Hampton, Newport News): Take I-64 west to Exit 242A, Williamsburg, Humelsine Parkway (Rt 199 West). Drive about 1.1 miles to the Exit for US 60. Turn right onto the exit. At the bottom of the ramp, turn left onto US 60 West. The Best Western Hotel is on your right in approximately 1.9 miles. **(From Richmond/Points North):** Travel east on I-64 and exit at Exit 238, "Camp Peary/Colonial Williamsburg", VA Route143. At top of ramp, turn right onto VA Route 143 East. At the junction with Route 5, continue straight on Route 5. In 2.1 miles, turn left on US Route 60 East (York St). The Best Western is on your left in approximately 0.1 miles after your turn.

(CONTINUED ON BACK PAGE)

**JOINT BASE (JB) LANGLEY-EUSTIS  
(FORMERLY CALLED FORT EUSTIS)**

**LOCATION:** Burger King, Bldg 1328, corner of Patton Ave and 13<sup>th</sup> Street, JB Langley-Eustis, Newport News, VA 23604.

**ENTRANCE REQUIREMENT:** All participants must have a US issued picture ID to enter Fort Eustis, plus the driver must have a valid driver's license, vehicle registration, and proof of insurance. No weapons are allowed to be carried onto Fort Eustis.

**DISTANCE:** There will be a choice of a 6- or 10- kilometer walk available.

**START AND FINISH TIMES:** Burger King is open Monday through Friday 6 AM to 8:30 PM, Saturday and Sunday 7:00 AM to 8:30 PM, but walk during daylight hours only. Ask a cashier for the walk box.

**COURSE DESCRIPTION:** Walk trail ratings are 1B. The trails are along roads on the grounds of JB Langley-Eustis. Trails are suitable for strollers or wheelchairs.

**FOR FURTHER INFORMATION:** Sandy Croushore at (757) 476-5789, email: [szcroushore@verizon.net](mailto:szcroushore@verizon.net)

**EVENT CLASSIFICATION:** Special program for which the walk qualifies include: Points of Reference, Walking the USA A-Z ("N" for Newport News), Walk the USA - Street by Street (AL, AR, CA, CT, FL, GA, IL, IN, IA, KS, KY, LA, ME, MD, MA, MI, MN, MS, MO, NE, NH, NJ, NY, NC, ND, OH, OK, PA, SD, TN, TX, UT, VT, VA, WV, WI, WY), and United States Post Offices. For the Virginia Cities Program: Newport News.

**HAMPTON**

**LOCATION:** Hampton Visitors Center, 120 Old Hampton Lane, Hampton, VA 23669.

**DISTANCE:** There will be a choice of a 6- or 10-kilometer walk available.

**START AND FINISH TIMES:** Monday Saturday 9 a.m. to 5 p.m.; Sunday 1 - 5 p.m. Closed on Thanksgiving Day, Christmas and New Years Day.

**REGISTRATION PROCEDURES:** Inquire at the information desk for the Peninsula Pathfinders walk start box. Complete the paperwork for the event by following the instructions in the box.

**COURSE DESCRIPTION:** Walk trail rating 1A. The walk trail will be primarily along city streets. The walk starts downtown Hampton and walks through "Old Hampton", to the Hampton University Museum, The Hampton Veterans Administration Hospital, past the Air and Space Museum back to the visitors' center. The trails are suitable for strollers and wheelchairs.

**FOR FURTHER INFORMATION:** Contact Shirley Boyd at (757) 722-5637, email: [walksboyd@aol.com](mailto:walksboyd@aol.com).

**EVENT CLASSIFICATIONS:** Walking the USA A-Z ("H" for Hampton), Bridges - Spanning the USA, Food for Thought, Take a Walk in a City Park and Walk the USA – Street By Street (AL, AR, AK, CA, CO, DE, GA, ID, IL, IN, IA, KS, KY, ME, MA, MI, MN, MO, MT, NE, NH, NJ, NM, NY, NC, ND, OH, OK, OR, PA, RI, TN, TX, UT, VT, VA, WA, WV, WI).

## YORKTOWN BATTLEFIELD (2 Walks)

## JAMESTOWNE

**LOCATION:** Ranger's Desk, Yorktown Battlefield Visitors Center, 1000 Colonial Parkway, Yorktown, VA 23690. To enter Yorktown, you must purchase a pass for \$10 per individual (ages 16 or over). This pass is good for seven consecutive days at both Yorktown and Jamestowne sites of the Colonial National Historical Park. You may also use a National Park pass to enter Yorktown. Entrance to the park is free on July 4 and October 19.

**DISTANCE:** There will be a choice of two separate 5- and 10-kilometer walks available. One is predominately through the town and some of the battlefield (called Town). The other is strictly in the battlefield (called Battlefield).

**START AND FINISH TIMES:** Closed Thanksgiving Day, Christmas Day and New Years Day. Visitor Center hours are 9:00 am - 5:00 pm each day.

**REGISTRATION PROCEDURES:** Inquire at the Rangers' desk for the Peninsula Pathfinders walk start box for the walk that you are interested in ("Town" or "Battlefield"). Complete the paperwork for the event by following the instructions in the box.

**COURSE DESCRIPTION:** Trail Rating 1B for Town Walk and a 2B for Battlefield Walk. The trails will be along the shoulder of roads through the battlefield area and through the historical town of Yorktown. Parts of the walk trails are on dirt pathways and may be difficult for wheelchairs. Strollers may be used.

**FOR FURTHER INFORMATION:** Contact Gordon Rheinstrom at (703) 282-2916, email: [grheinstrom@gmail.com](mailto:grheinstrom@gmail.com).

**EVENT CLASSIFICATIONS:** Both: Walking the USA A-Z ("Y" for Yorktown), Bridges-Spanning the USA, and National Parks Centennial Challenge. Town Walk only: Animal Safari, Food for Thought, Lady Liberty, Make a Wish at a Water Fountain, Walk the USA – Street By Street (CA, GA, IL, MN, MO, NE, PA, UT, VA, WV, WI) and Walking America's Ports of Call. For the Virginia Counties Program: York County.

**LOCATION:** Information Desk, Jamestowne Visitors Center, 1368 Colonial Parkway, Jamestown, VA 23081. The 5, 10, and 12 km walks are on National Park lands and may be walked with your National Park or Golden Age Pass without paying an additional fee. A combined pass may be purchased for Yorktown and Jamestowne. Fees good for 7 days after purchase. The 2 km extension goes through the old fort, church, and town area, which are Preservation Virginia property and require an admittance fee. A number of different fee options are available. See [www.nps.gov/jame](http://www.nps.gov/jame) for up-to-date entry information. On May 9 and August 25, there will be no fee for entering the park.

**DISTANCE:** There is a choice of a 5, 10, or 12 km walk with a 2 km extension available.

**START AND FINISH TIMES:** Hours for the Visitors Center are 9:00 am - 5:00 pm. The entrance station is open from 8:30 am - 4:30 pm each day. Closed Thanksgiving, New Years Day and Christmas Day.

**COURSE DESCRIPTION:** Trail Rating 1B. The walk trail is along the shoulder of roads in the park area and along dirt paths through the area where the town of Jamestowne was located. Parts of the walk trails are on dirt pathways and may be difficult for wheelchairs. Strollers may be used.

**FOR FURTHER INFORMATION:** Contact Pam Bowers at (757) 564-0147, email: [pbowers3@cox.net](mailto:pbowers3@cox.net).

**EVENT CLASSIFICATIONS:** America's Ports of Call, Boardwalks, Bridges-Spanning the USA, National Parks Centennial Challenge, Treasure Hunt, Walk the USA – Street By Street (KY), and Walking the USA A-Z ("J" for Jamestowne). For the Virginia Counties program: James City County.

## NEWPORT NEWS–HILTON VILLAGE

**LOCATION:** YMCA (now called the "Y"), 7827 Warwick Blvd., Newport News, VA 23607.

**DISTANCE:** There will be a choice of a 5- or 10-kilometer walk available.

**START AND FINISH TIMES:** The start point is open from 5:30 am to 10:00 pm (but you MUST walk during daylight hours) Monday thru Friday, 7:00 am to 5:00 pm on Saturday, and 1:00 pm to 5:00 pm on Sunday. The Y is closed on major holidays to include Easter.

**REGISTRATION PROCEDURES:** The start box is on a table behind the front/registration desk. Complete the paperwork for the event by following the instructions in the box.

**COURSE DESCRIPTION:** Walk trail rating 1A. The walk trail will be along sidewalks and road shoulders. The trail goes through scenic neighborhoods and is suitable for strollers but may be difficult for wheelchairs.

**FOR FURTHER INFORMATION:** Contact Cheryl Lauria at (757) 771-6863, email: [cheryl.lauria@gmail.com](mailto:cheryl.lauria@gmail.com).

**EVENT CLASSIFICATIONS:** Walking the USA A-Z ("N" for Newport News), Animal Safari, Bridges-Spanning the USA, Food for Thought, Take a City Park, Walk the USA – Street By Street (AL, AK, CA, CO, CT, DE, GA, IL, IN, IA, KS, KY, ME, MD, MA, MI, MN, MS, MO, NE, NH, NJ, NM, NY, NC, ND, OH, OK, OR, PA, RI, SC, SD, TN, TX, UT, VT, VA, WA, WI, WY), and Walking the Path of Inventions. For the Virginia Cities program: Newport News.

## HISTORIC FORT MONROE

**LOCATION:** Casemate Museum, 20 Bernard Road, Fort Monroe, VA, 23651, 757-788-3391. Go in the EXIT door and the walk start box is located in the museum office (not the sales office). There are no entrance requirements for Historic Fort Monroe.

**DISTANCE:** There will be a choice of a 5- or 10-km trail.

**START AND FINISH TIMES:** Tuesday thru Sunday: 10:30 a.m. - 4:30 p.m. Closed Monday's except National Holidays.

**REGISTRATION PROCEDURES:** Complete the paperwork for the event by following the instructions in the box.

**COURSE DESCRIPTION:** Walk trail rating 1B. The walk trail will be along roads on the fort. The trail is suitable for strollers and wheelchairs. Part of the trail goes through and along the top of the old Fort. This section is not suitable for strollers or wheelchairs but can be bypassed.

**FOR FURTHER INFORMATION:** Contact Shirley Boyd at (757) 722-5637, email: [walksboyd@aol.com](mailto:walksboyd@aol.com).

**EVENT CLASSIFICATIONS:** Walking the USA A-Z ("H" for Hampton), Amphitheaters, Animal Safari, Bridges-Spanning the USA, Food for Thought, National Parks Centennial Challenge, Underground Railroad, and Walk the USA – Street By Street (AK, CT, IN, IA, KS, ME, MI, NV, WV, WI). For the Virginia Cities Program: Hampton.

## COLONIAL WILLIAMSBURG WALK

**LOCATION:** Registration desk of the Best Western Hotel, 351 York St, Williamsburg, VA 23185

**DISTANCE:** There will be a choice of a 5- or 10-kilometer walk that goes through Colonial Williamsburg.

**START AND FINISH TIMES:** Dawn to Dusk

**REGISTRATION PROCEDURES:** Inquire at the registration desk for the Peninsula Pathfinders' walk box. Complete the paperwork for the event by following the instructions in the box. Remember that the start point is a business so be patient while they wait on their customers.

**COURSE DESCRIPTION/TRAIL RATING:** Colonial Williamsburg: both trails are rated 1A. Trails are on sidewalks and along shoulders of roads through the historic area of Colonial Williamsburg and the College of William and Mary campus. The trail is suitable for strollers or handicapped.

**FOR FURTHER INFORMATION:** Contact Pam Bowers at (757) 564- 0147, email: pbowers3@cox.net.

**EVENT CLASSIFICATIONS:** Amphitheaters, Animal Safari, Bridges—Spanning the USA, Food for Thought, Ice Cream Parlors, Make a Wish at a Water Fountain, Take a Walk in a City Park, Treasure Hunt—a way to walk our precious trails, United States Post Offices, Vice Presidential Walks (Jefferson, Tyler), Walk the USA Street By Street (AL, AR, AK, CA, CO, CT, DE, GA, IL, IN, KS, KY, LA, ME, MA, MI, MN, MS, MO, NE, NJ, NM, NY, NC, ND, OH, OK, OR, PA, RI, SC, SD, TN, TX, UT, VT, VA, WA, WV, WI), and Walking the Paths of Invention.

## NEWPORT NEWS– NOLAND TRAIL (MM) CHRISTOPHER NEWPORT UNIVERSITY (CNU)

**LOCATION:** Mariners' Museum (Visitors' Desk), 100 Museum Drive, Newport News, VA, 23606.

**DISTANCE:** There will be a choice of two (2) separate walks. One is a 5- or 11-km walk (Mariners' Museum), the other is a 6- or 10-km walk (CNU).

**START AND FINISH TIMES:** Monday-Sat 9-5; Sunday 11-5.

During winter may close Mondays. If you want to walk on Monday, call (Visitors Desk), 757-596-2222 to see if they are open. The museum is closed on Thanksgiving and Christmas.

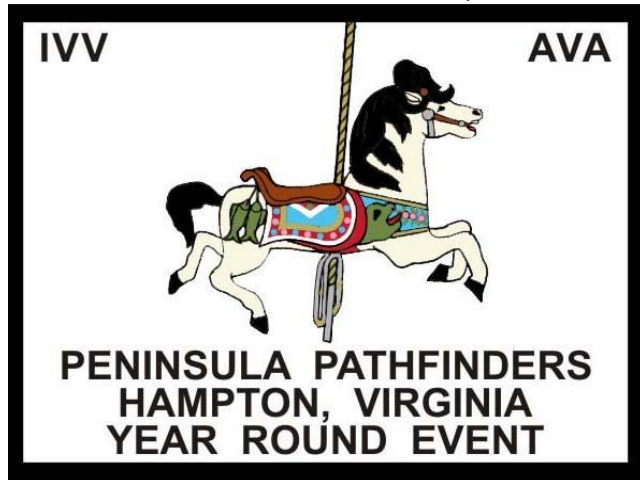
**REGISTRATION PROCEDURES:** Inquire at the Mariners' Museum Visitors Desk for the Peninsula Pathfinders walk box. **Since two walks start from here, ensure that you have the walk box for the event you want to walk.** Complete the paperwork for the event by following the instructions in the box. Remember that the start point is a business. Please be patient while they wait on their customers.

**COURSE DESCRIPTION:** MM: Walk trail rating 1B. The trail is on the grounds of the Mariners' Museum (one of the finest maritime history museums in the world and is now the home to the Monitor Center) and includes the Noland Trail. The trail will be primarily through the woods around Lake Maury. CNU: Walk trail rating 1A. The trail is through the Campus of CNU to include Captains Park (where the CNU baseball team plays). The CNU trails include a walk past Causey's Grist Mill. All CNU walks feature the I.M. Pei designed Ferguson Center for the Arts. CNU trail is suitable for strollers. Neither trail is suitable for wheelchairs.

**FOR FURTHER INFORMATION:** Contact Ron Berard @ (757) 890-9220, email: walkingtheuse@gmail.com.

**EVENT CLASSIFICATIONS:** Both: Animal Safari, Ice Cream Parlors, Make a Wish at a Water Fountain, Walking America's Ports of Call, and Walking the USA A-Z ("N" for Newport News). For those walking the Virginia Cities program: Newport News. Noland Trail Only: Boardwalks, Bridges-Spanning the USA, and Walk the USA – Street By Street (GA, MD, MA, NY, ND, OK, RI). CNU Only: Walk the USA – Street By Street (AL, CA, CT, FL, GA, ID, IL, IA, KS, MD, MA, MI, MS, MO, MT, NJ, NY, ND, OH, OK, OR, PA, RI, SC, TX, UT, WA, WY).

HAMPTON PATCH IS \$8.00



4 in by 3 in patch of one of the horses on the Hampton Carousel  
14 Available - No reorder

YORKTOWN PATCH IS \$9.00



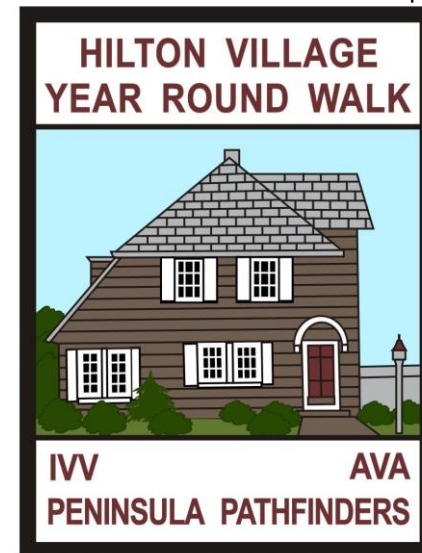
4 in by 3 in patch of a reproduction of a 10-cent stamp of a Colonial Continental Marine  
30 Available - No reorder

MARINERS' MUSEUM PATCH IS \$9.00



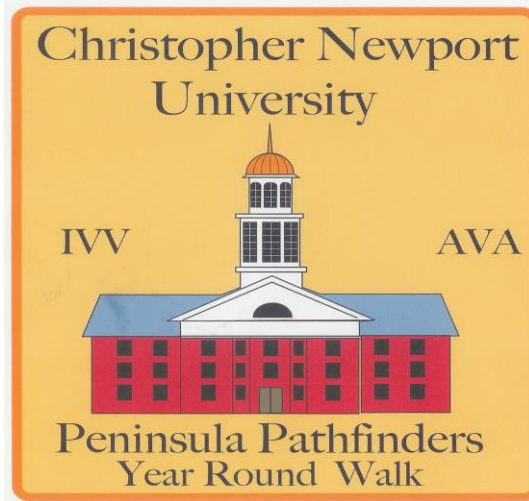
4 in by 3 in patching of the Ironclad Clash  
13 Available - No reorder

HILTON VILLAGE PATCH IS \$9.00



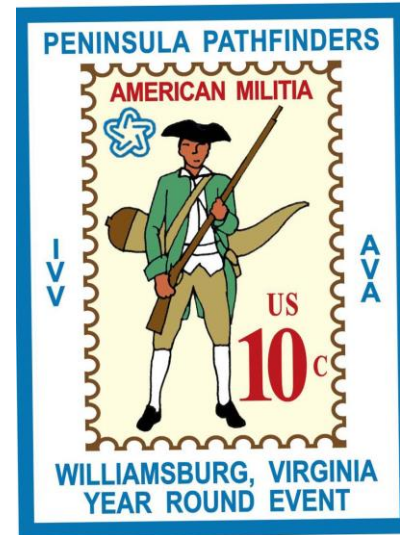
3 in by 4 in patch of one of the houses on the trail  
10 Available - No Reorder

**CHRISTOPHER NEWPORT UNIVERSITY PATCH IS \$7.00**



**3 in by 4 in patch of one of the CNU Buildings  
5 Available - No reorder**

**WILLIAMSBURG PATCH IS \$9.00**



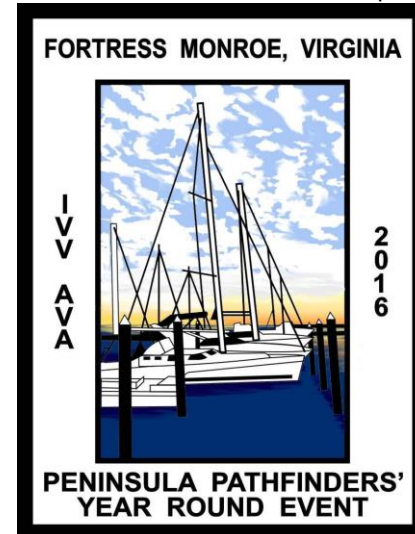
**4 in by 3 in patch of a reproduction of a 10-cent stamp of  
an American Militia Soldier  
43 Available - No reorder**

**JAMESTOWNE PATCH IS \$9.00**



**3 in by 4 in patch of a 10-cent  
stamp of a Continental Navy Sailor  
31 Available - No reorder**

**FORT MONROE PATCH IS \$8.00**



**4 in by 3 in patch of the harbor at Fort Monroe  
23 available - will reorder**

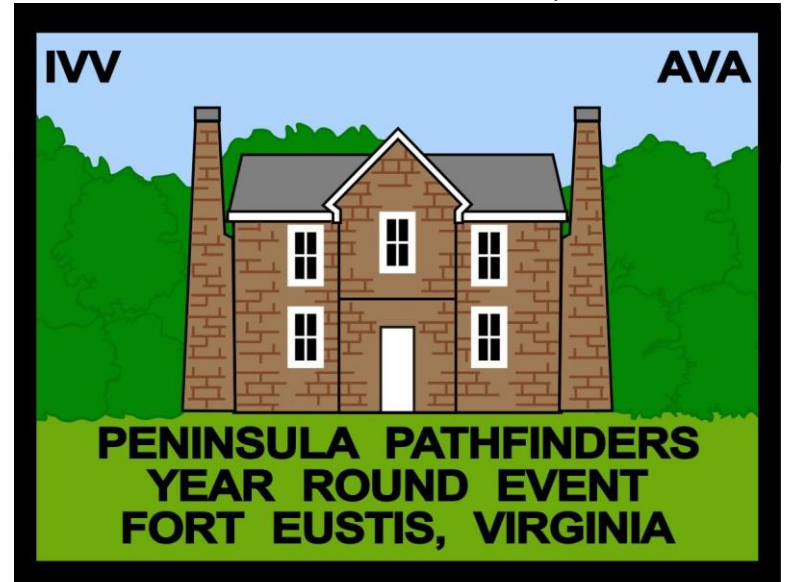


### **WHAT IS A VOLKSMARCH?**

A non-competitive walk event where a participant follows a marked trail at his/her own pace, stopping at points for a "control stamp", rest, and refreshments. Volksmarches are aimed at getting all people, regardless of age, out-of-doors to exercise non-competitively. Many senior citizens participate regularly. Many parents bring their children with them, carrying infants (or use strollers or wagons where the terrain allows). More information can be found at [www2.ava.org](http://www2.ava.org).

**EVERYONE IS A WINNER!** When awards are available, each participant who purchases a start card and pays the award fee receives an attractive commemorative award upon completion of the trail. Participants may enroll in the international (IVV) awards program by purchasing the proper record books (event, distance, or both). Completing all or part of the trail entitles the participant to a certification stamp for the record books. Upon completion of a record book, the owner receives a certificate, a hatpin, and a patch, in recognition of reaching a certain milestone.

**FORT EUSTIS PATCH IS \$7.00**



**4 in by 3 in patch of Mathews Jones House  
18 Available - No reorder**



## Peninsula Pathfinders' 2018 Year Round Walks